

# Can you be a 'DNA Detective' like Annabelle and Harry in the story?

Five dogs have been stolen; Jake, Evie, Poppy, Murphy and Ben.

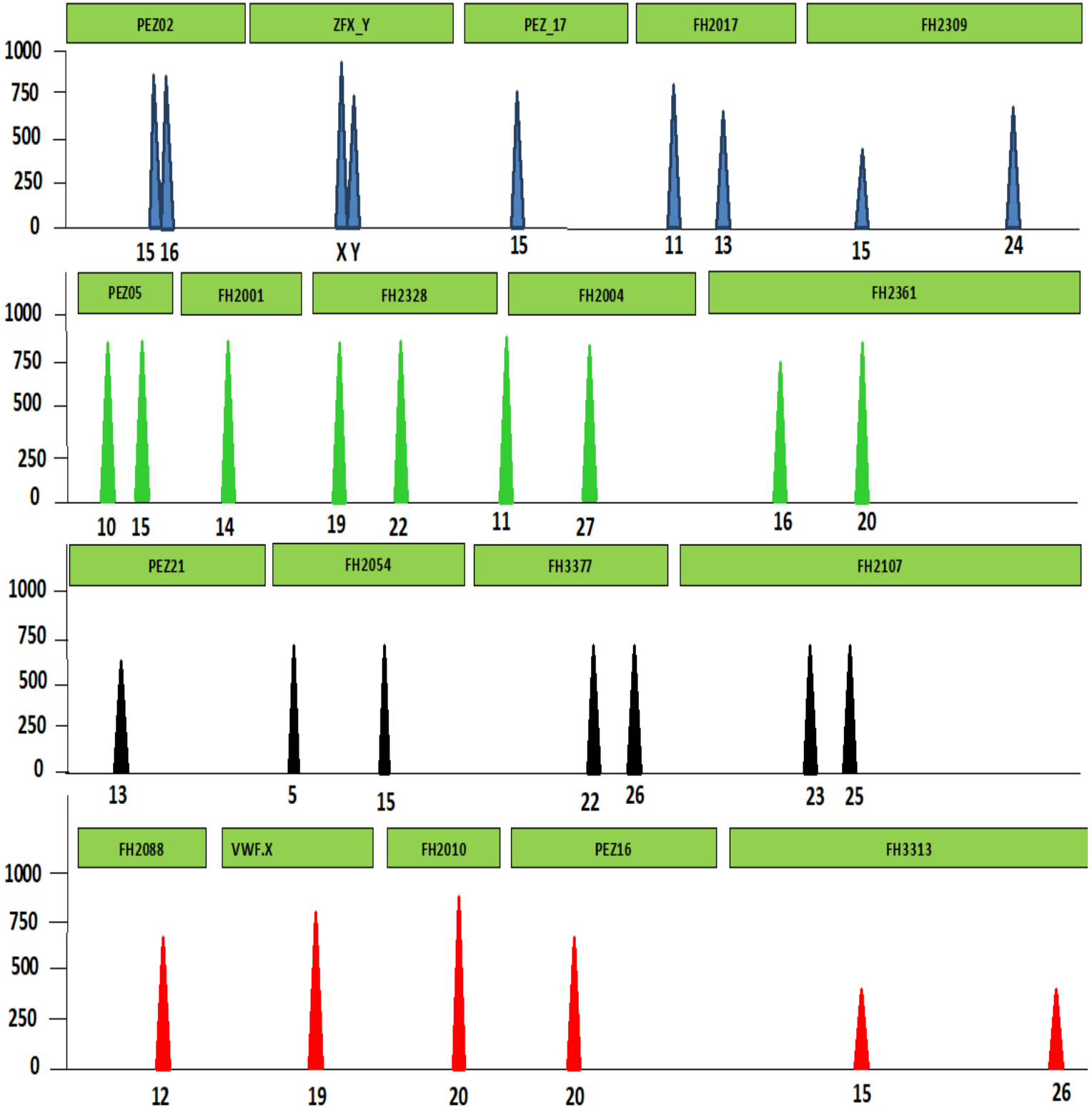
You have DNA profiles for all five dogs which you have been able to collect from their brushes, dog bowls and bones. You found fur in the shed from three dogs and have DNA profiles for this. Print out the DNA profiles so you can spread them out on the floor and compare them.

Can you match up the DNA from the stolen dogs with the DNA in the shed to work out which three dogs are being kept there? Remember **ALL** the peaks and the numbers need to be the **SAME** for the dogs to be a **MATCH!**

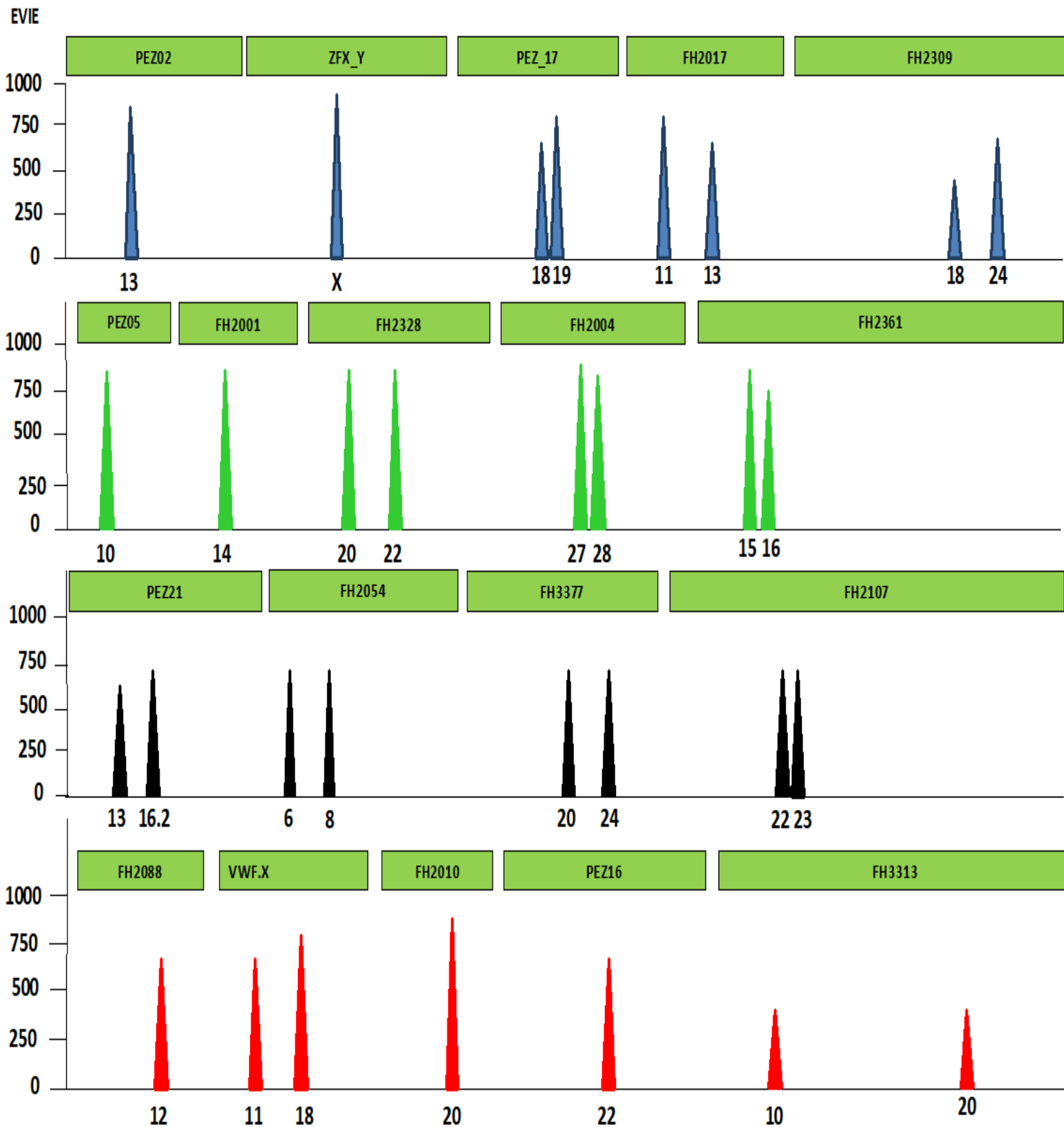
# DOG 1 – JAKE



JAKE



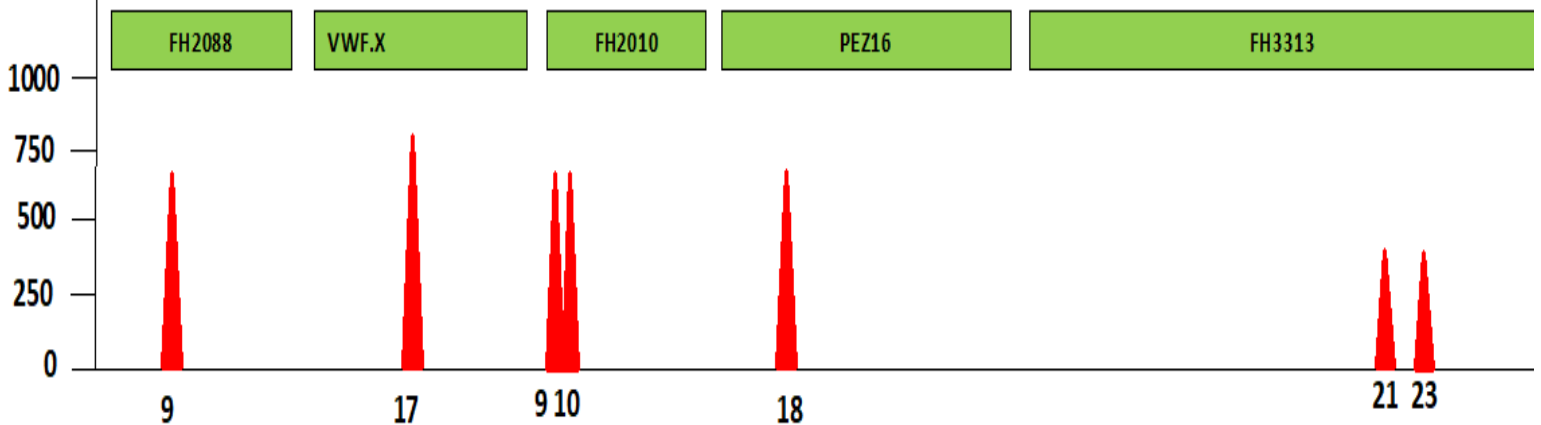
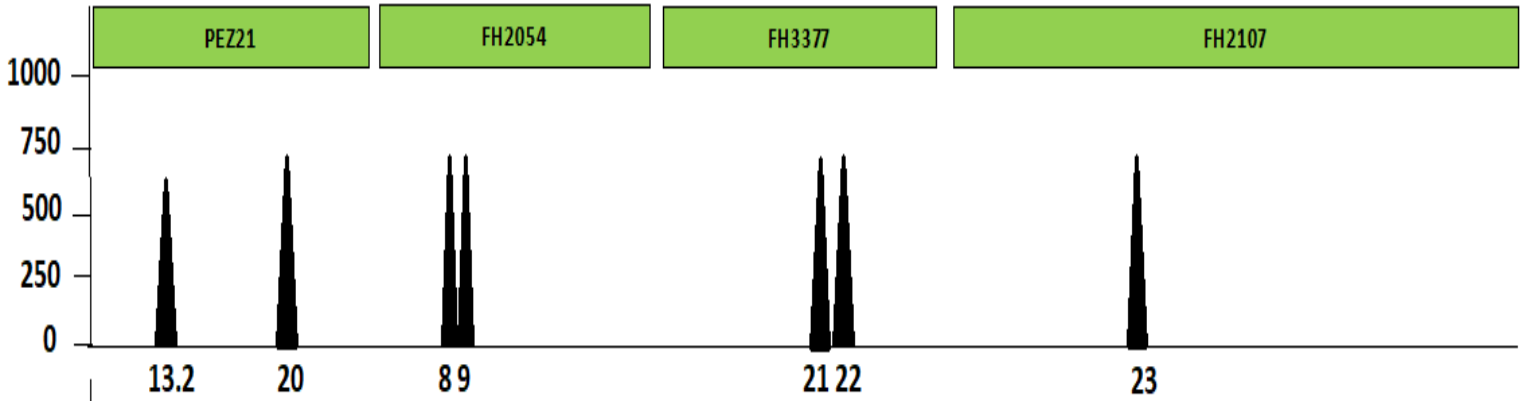
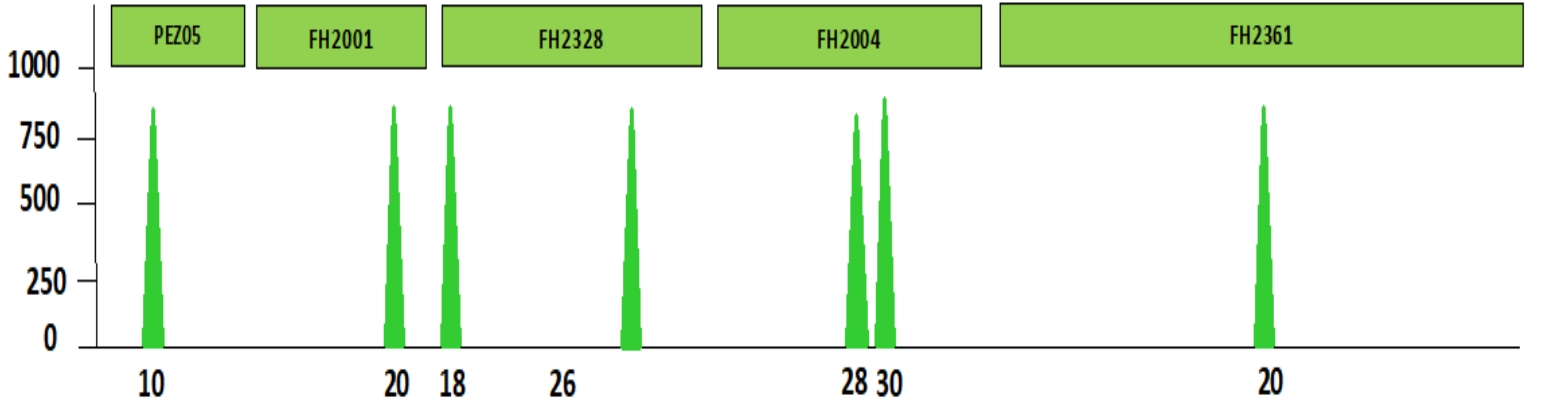
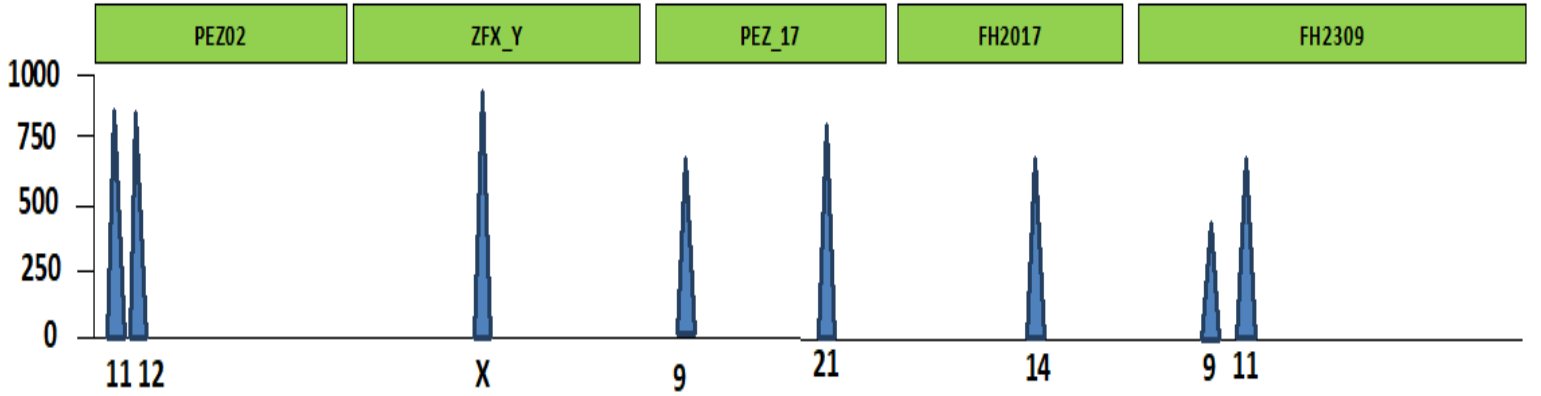
# DOG 2 – EVIE



# DOG 3 – POPPY



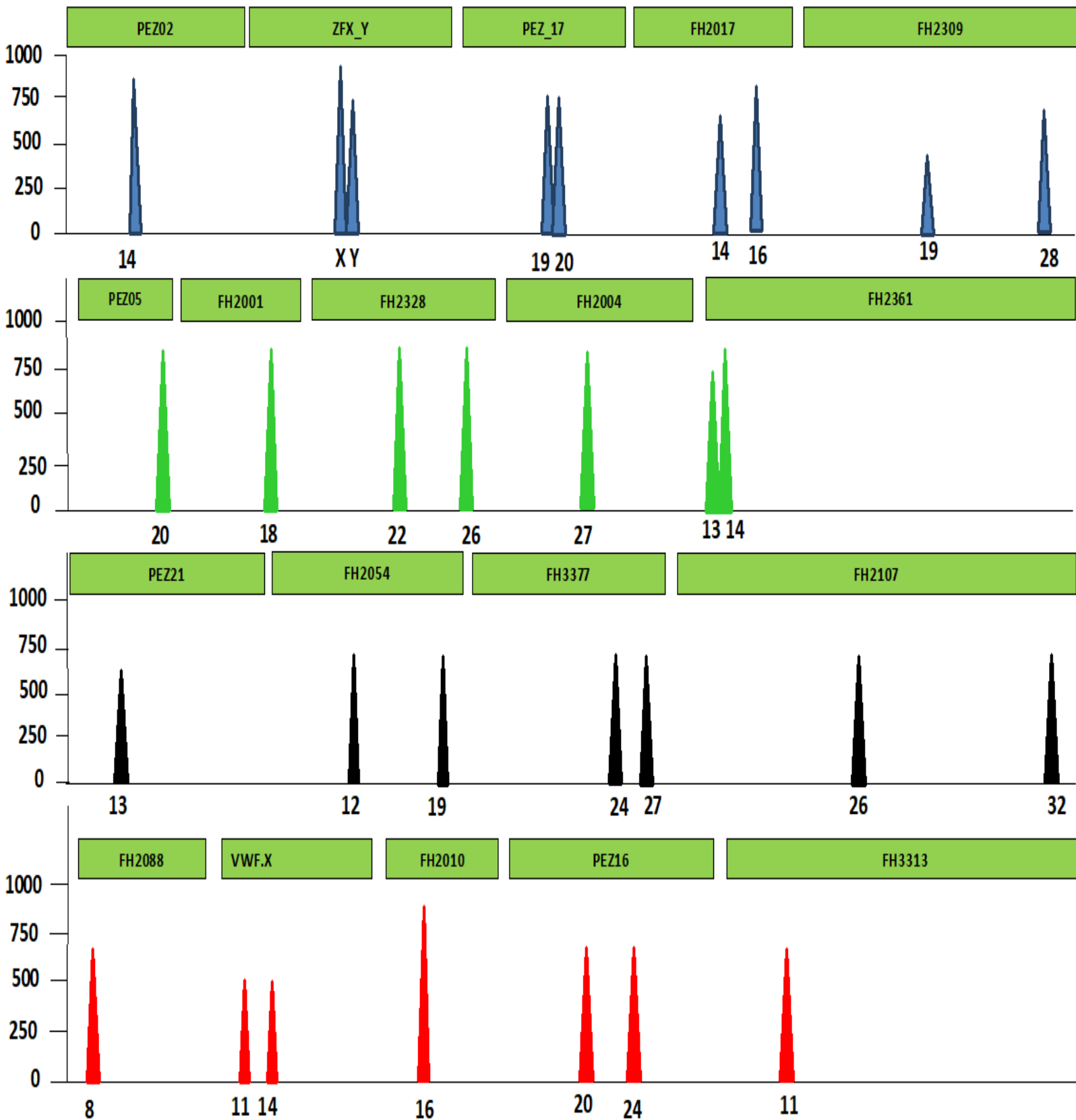
POPPY



# DOG 4 – MURPHY



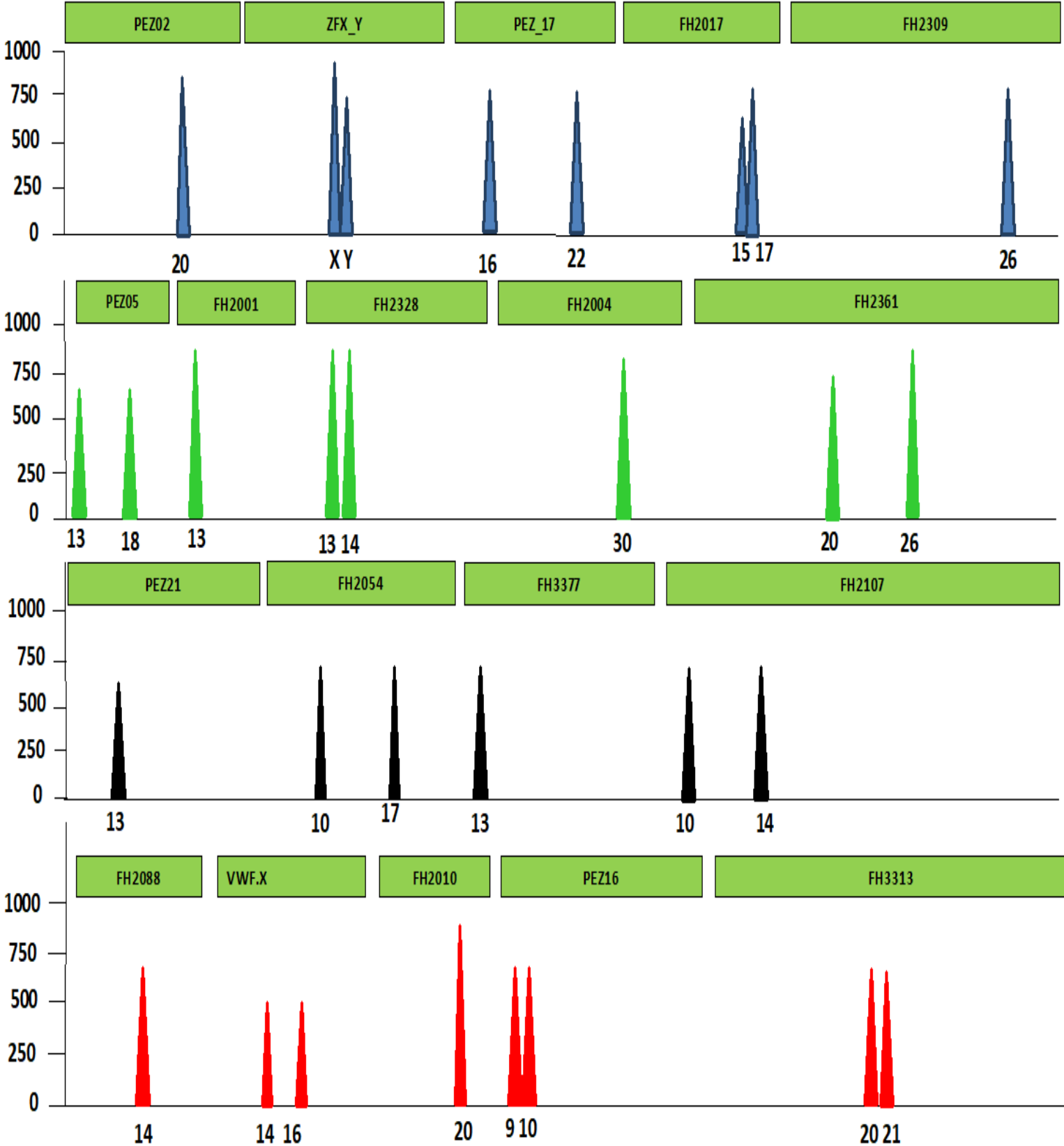
MURPHY



# DOG 5 – BEN

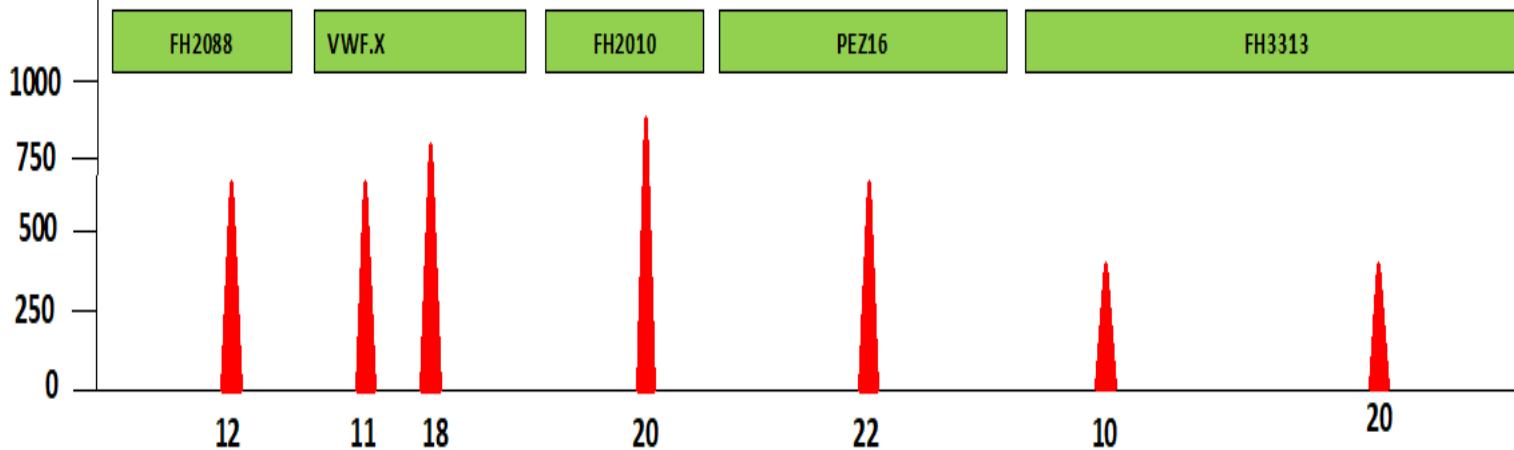
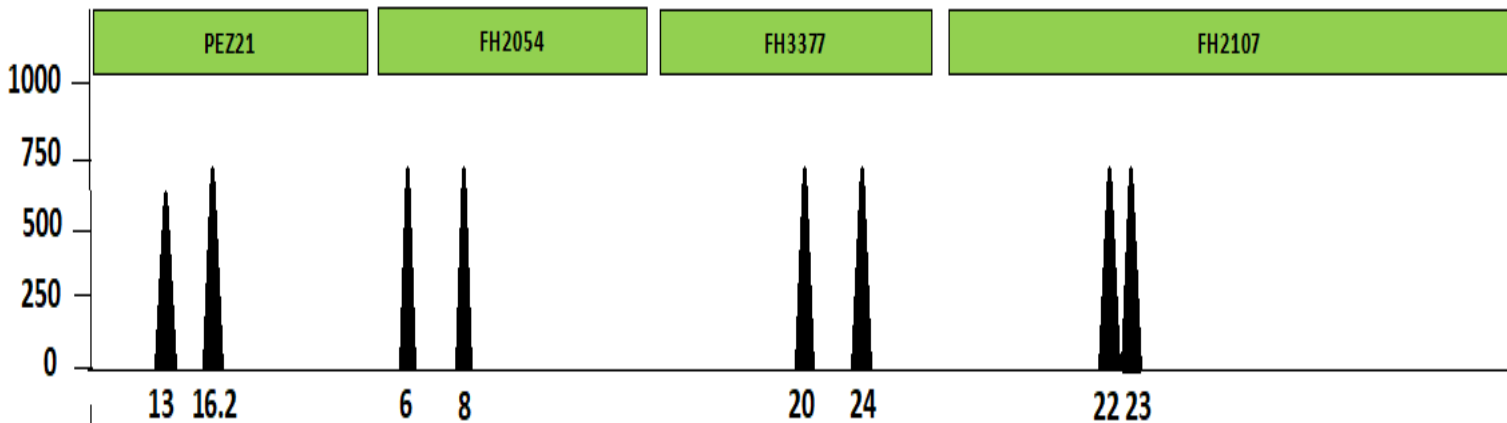
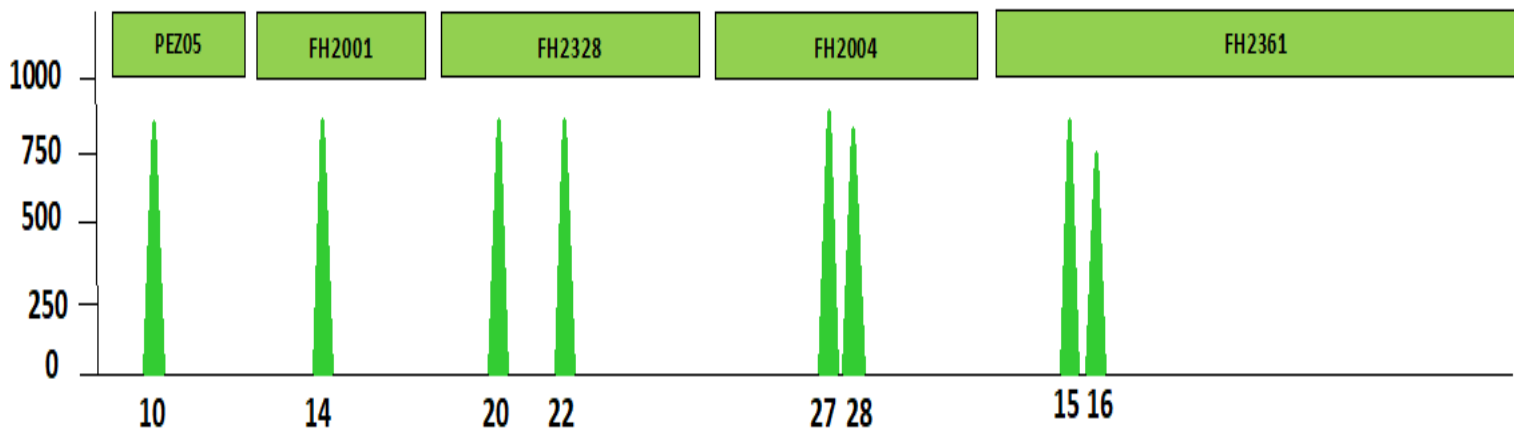
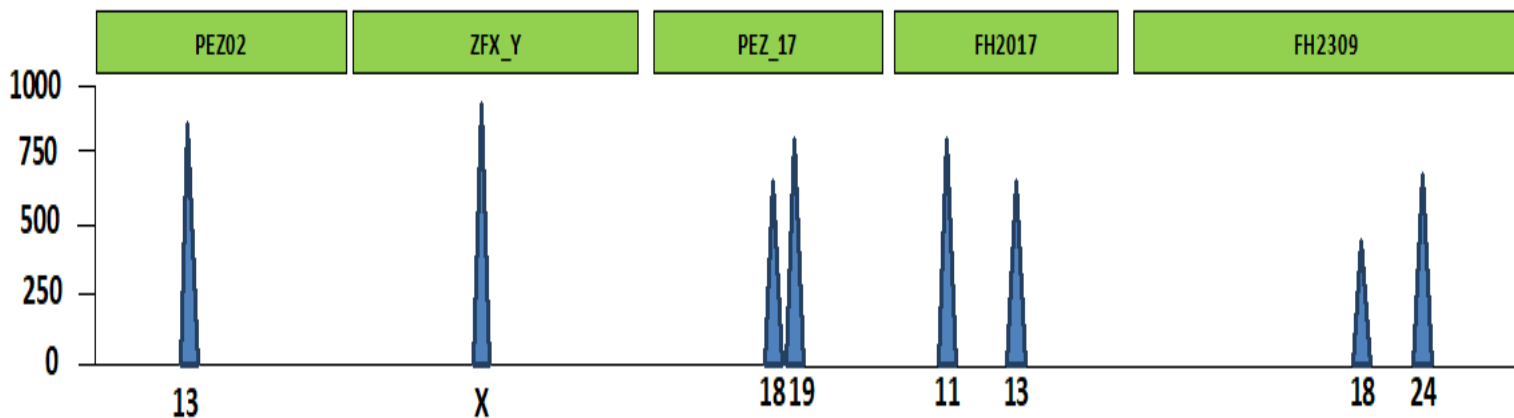


BEN



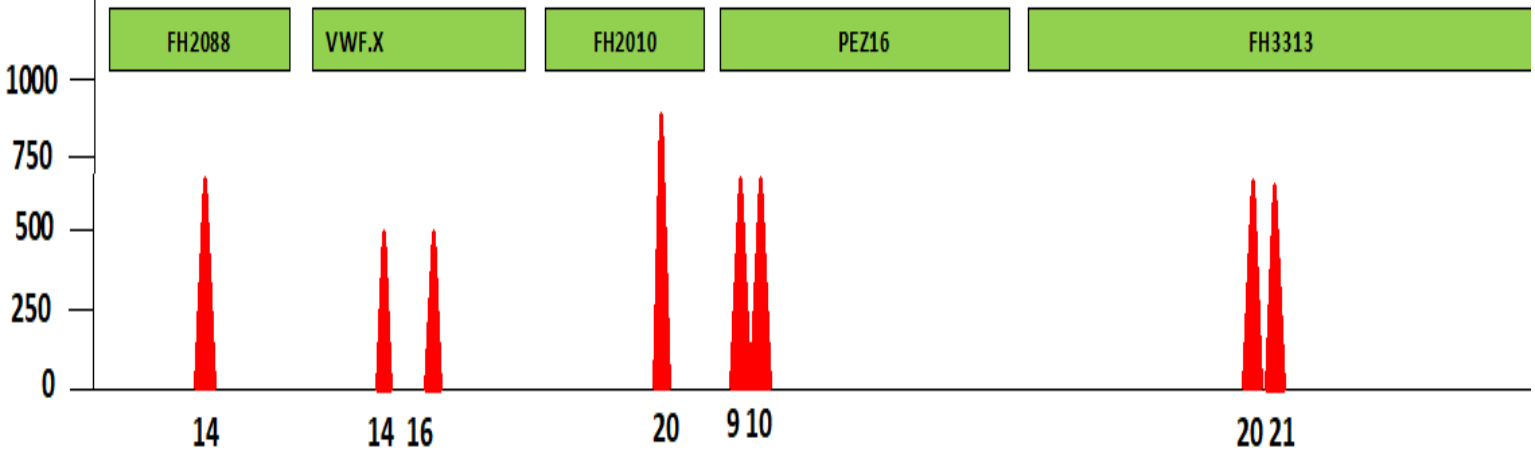
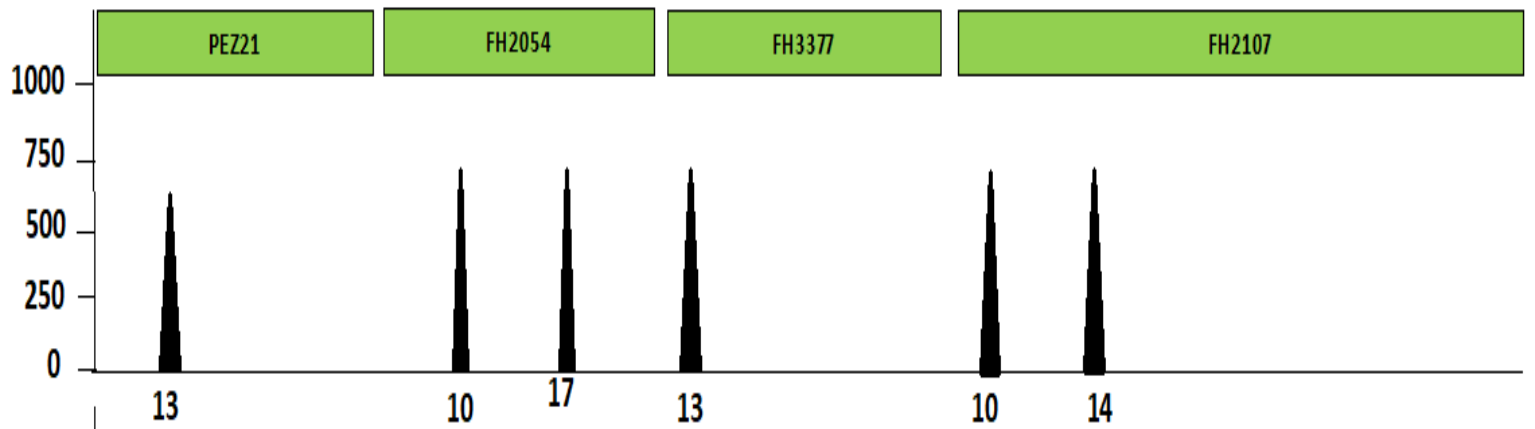
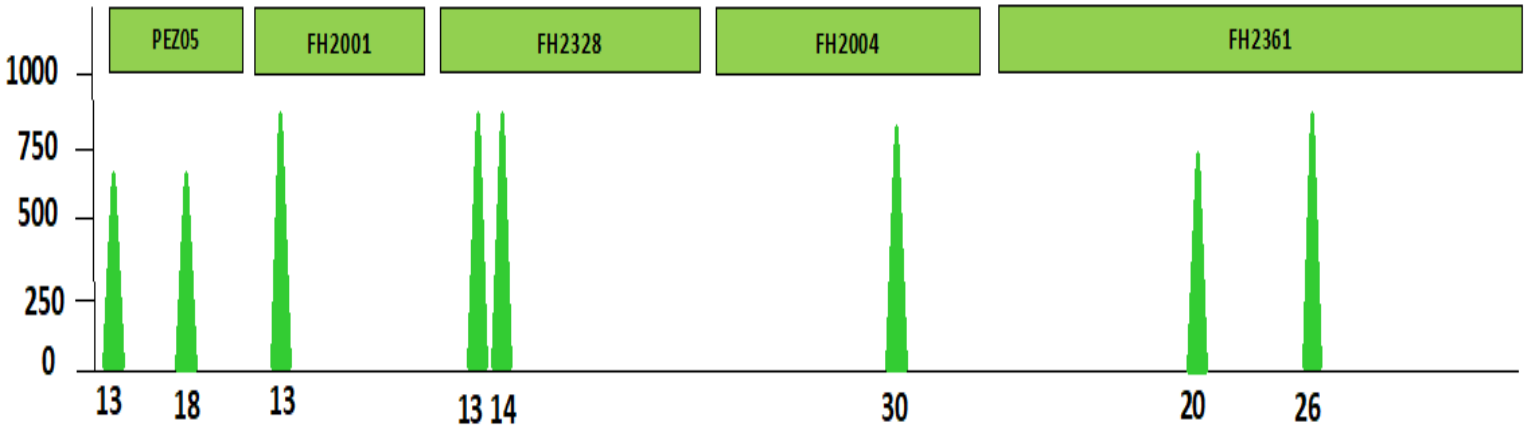
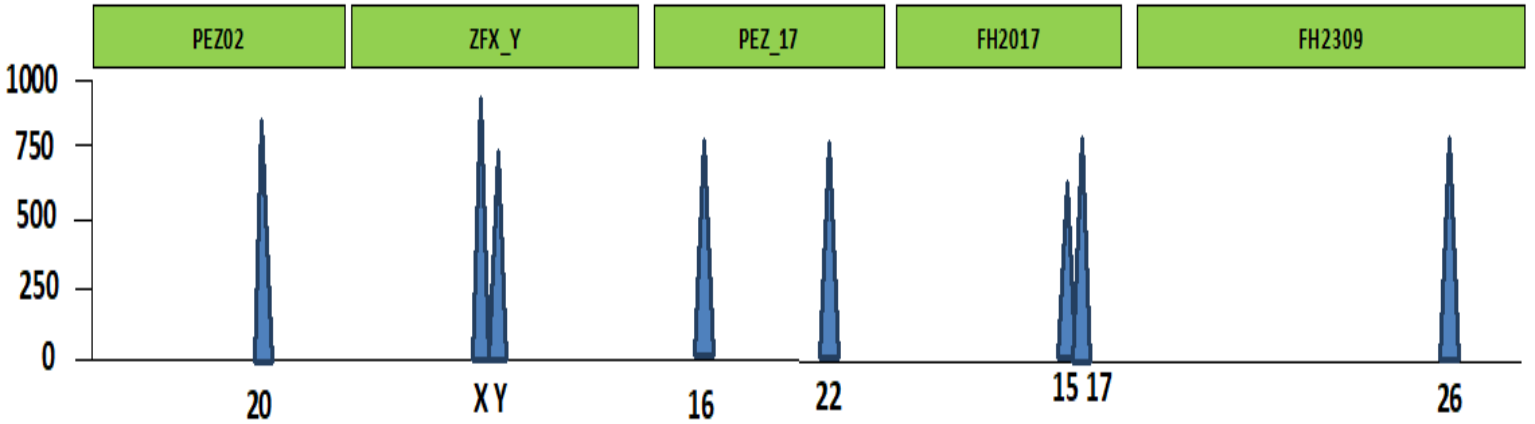
# DOG 1? (FUR)

DOG 1?



# DOG 2? (FUR)

DOG 2?





# DOG 3? (FUR)

DOG 3?

