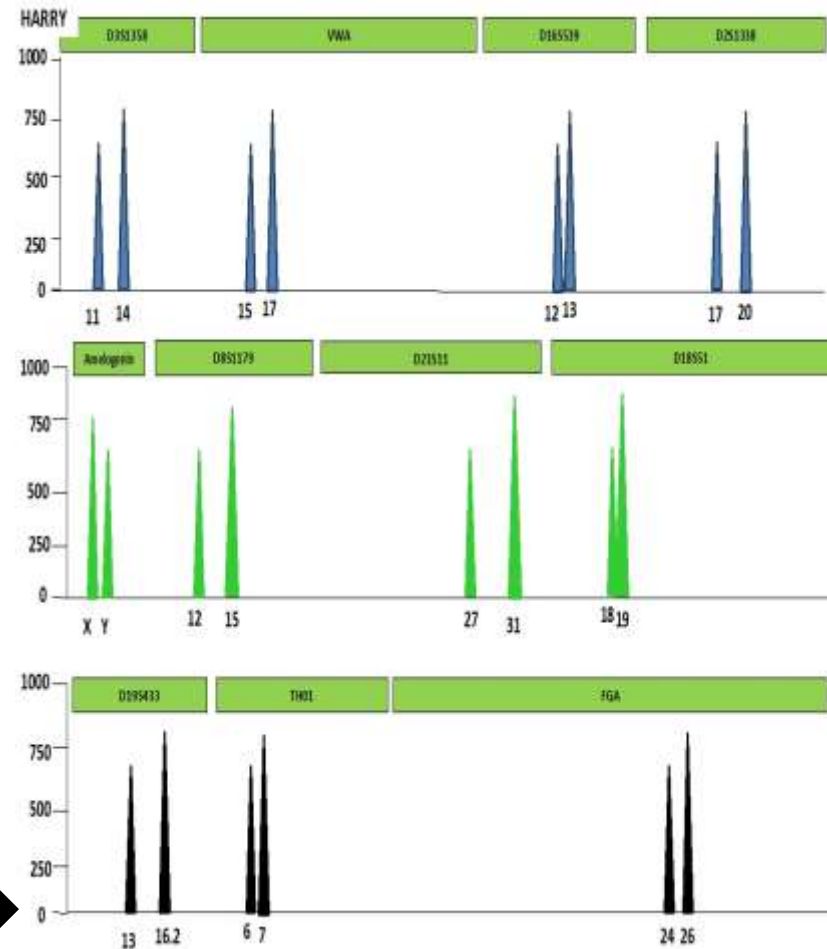


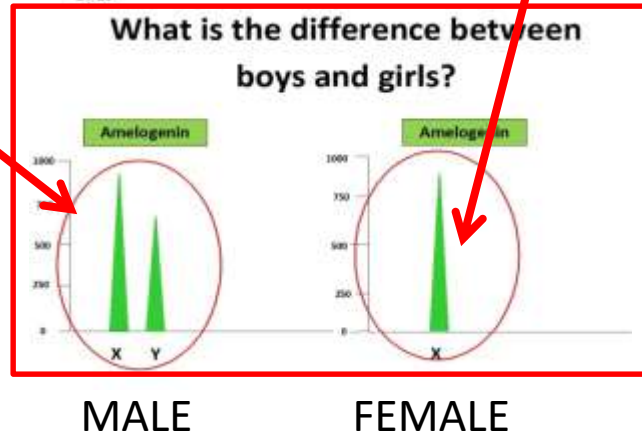
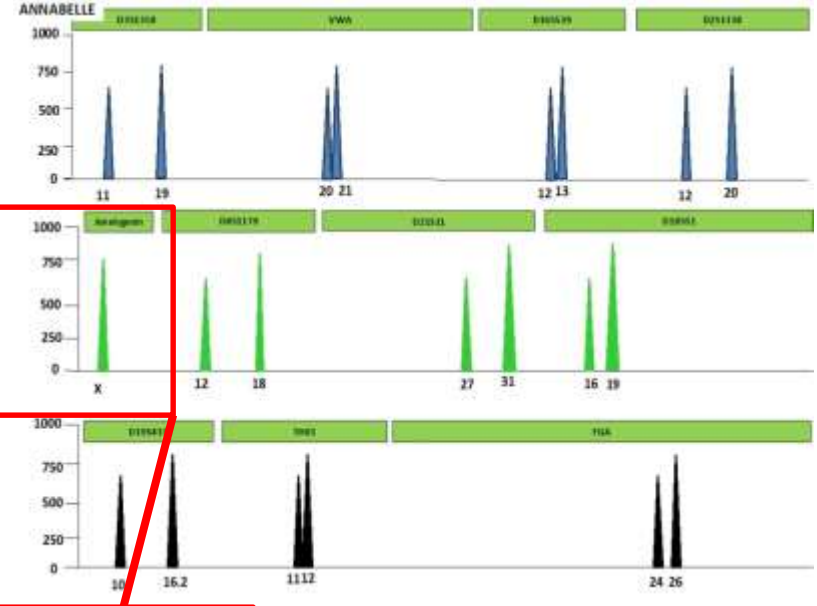
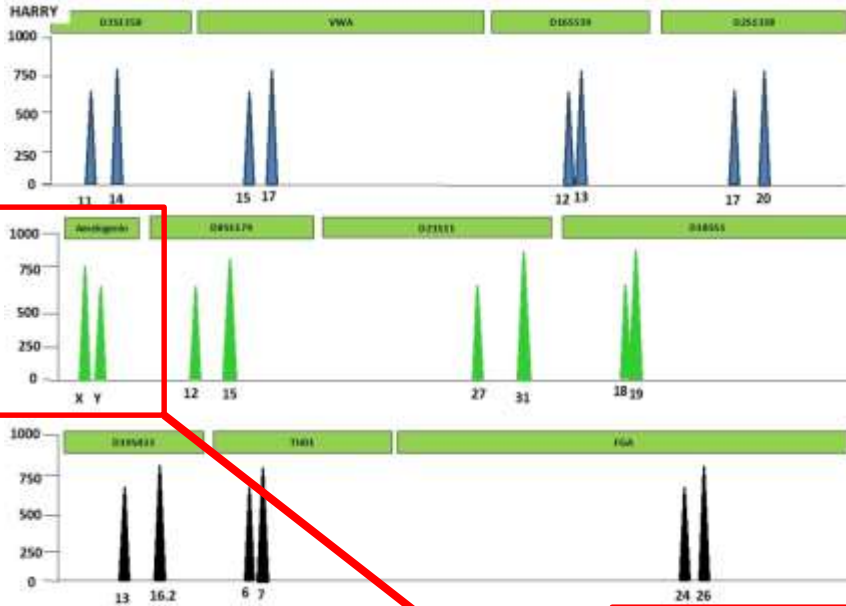
How can you tell if DNA is from a boy or a girl?

First we need to look at the **DNA profile** for that person. But what is a DNA profile?

When Forensic scientists are trying to identify a criminal they use what is called a '**DNA profile**'. This is a pattern generated in the laboratory from someone's DNA. This pattern is unique to that individual. No one else will have the same pattern – unless they are identical twins! The DNA profile has coloured peaks and numbers on it and it looks like this

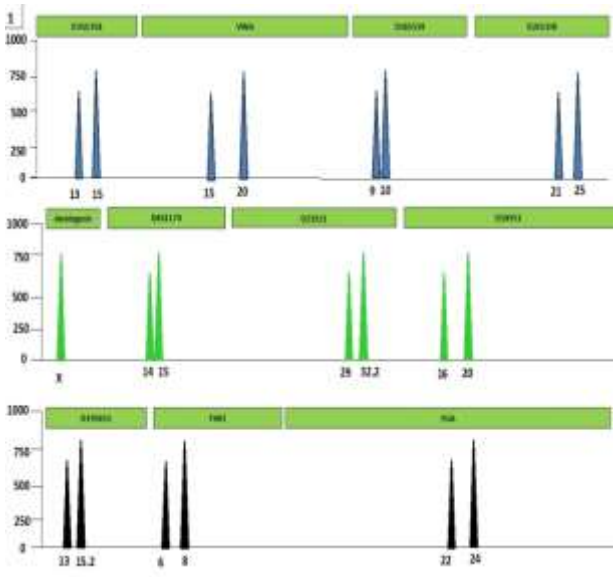


Look at the DNA profiles below. If you look carefully at Harry's DNA profile you can see he has an 'X,Y'. This shows he is male. Annabelle has an 'X' which shows she is female.

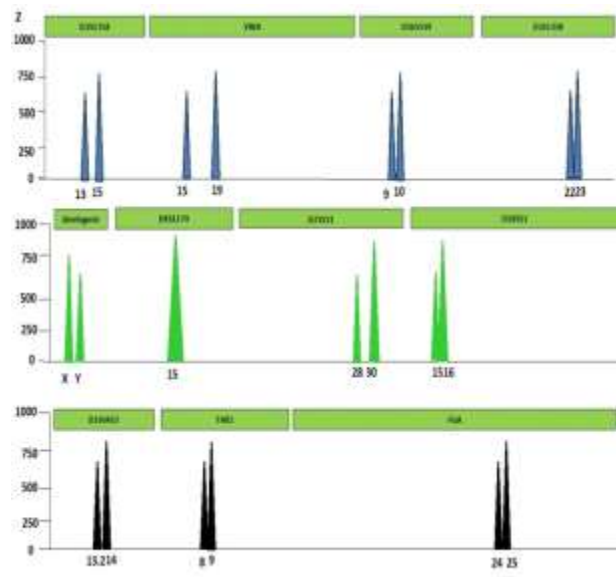


Dr Wallace has collected DNA from six of Annabelle and Harry's friends. Can you identify how many are boys and how many are girls?

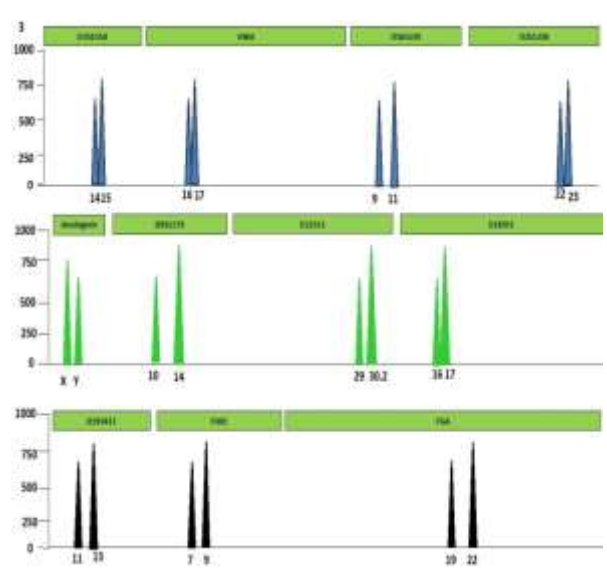
Child 1



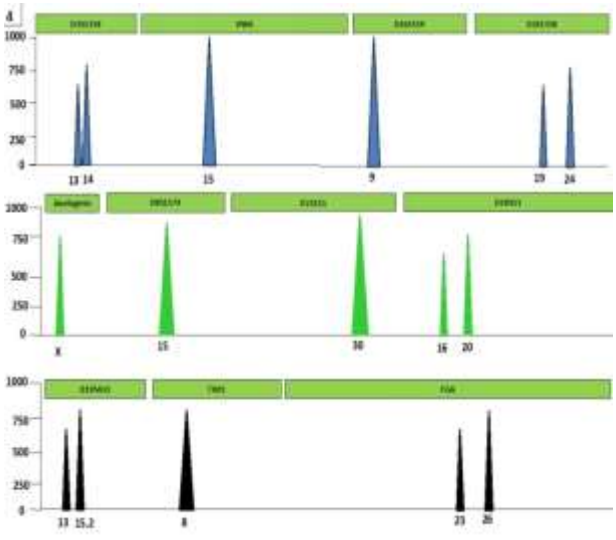
Child 2



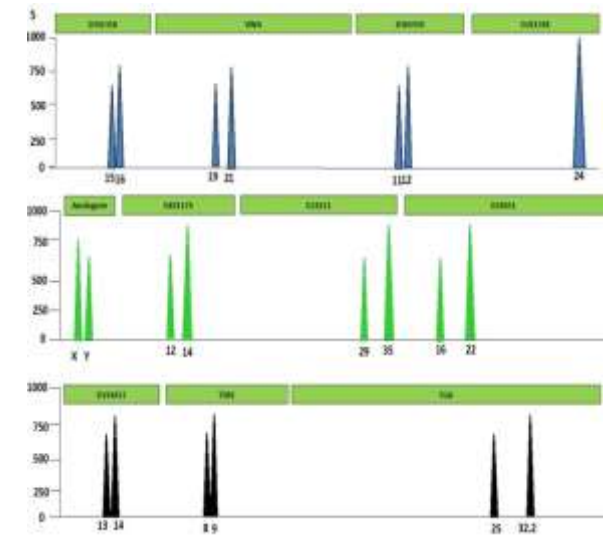
Child 3



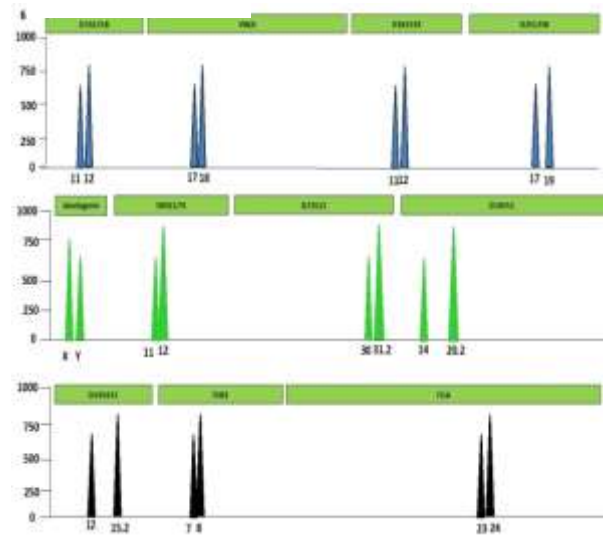
Child 4



Child 5

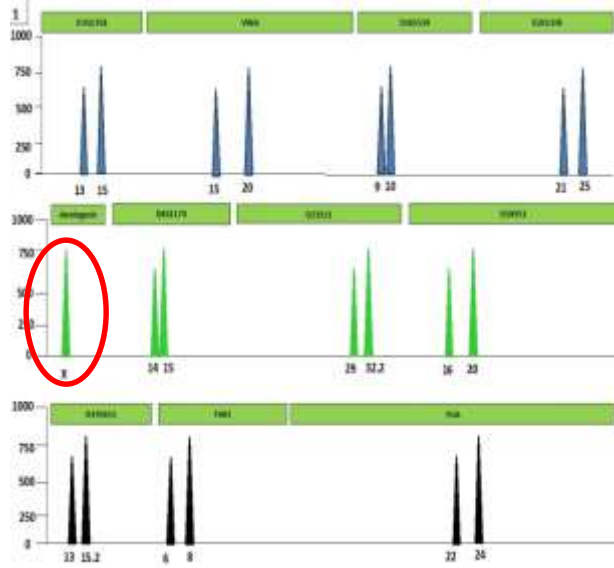


Child 6

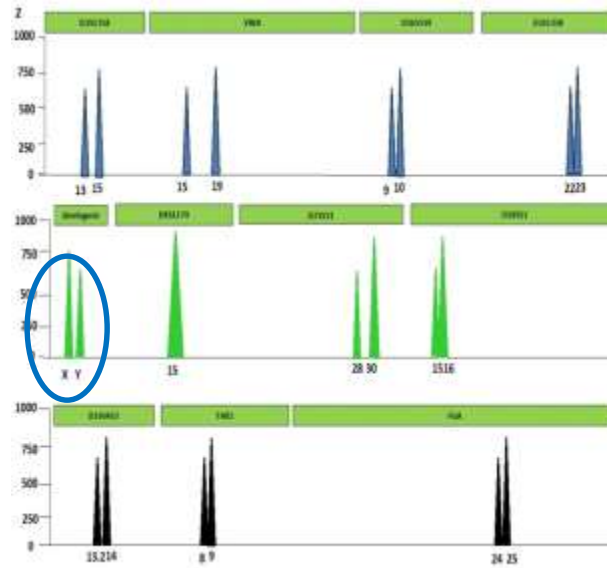


Two of Annabelle and Harry's friends are female. Four of their friends are male. Did you get it right? Well done!

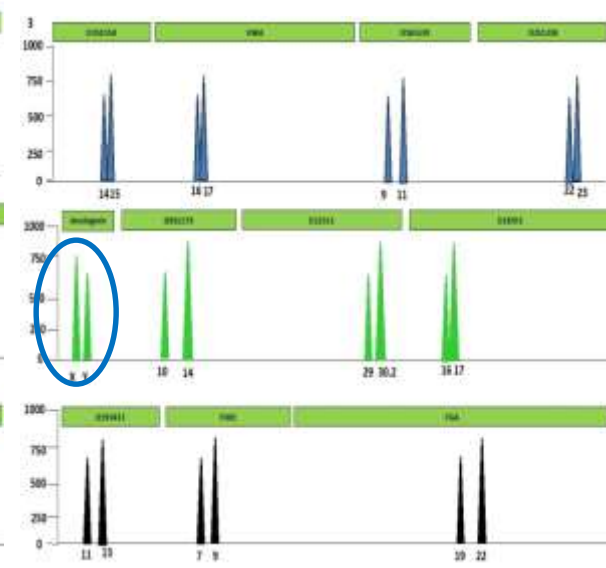
Child 1: FEMALE



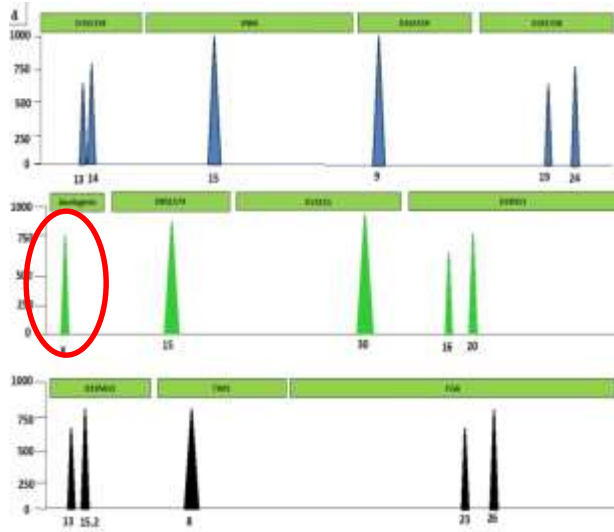
Child 2: MALE



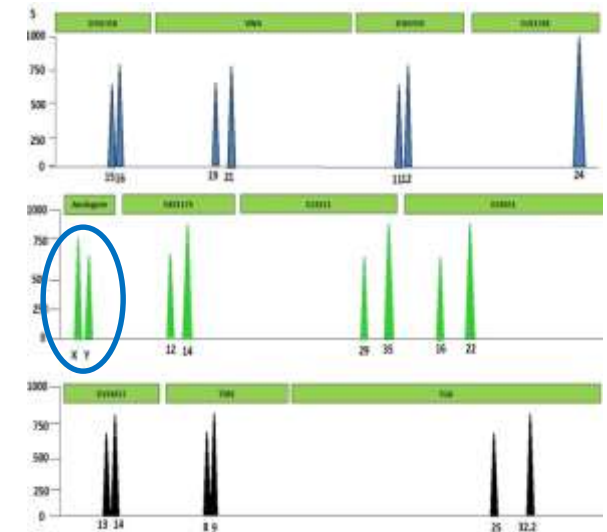
Child 3: MALE



Child 4: FEMALE



Child 5: MALE



Child 6: MALE

